

## Classic Twin Shock Trials Bike Collection at Charterhouse

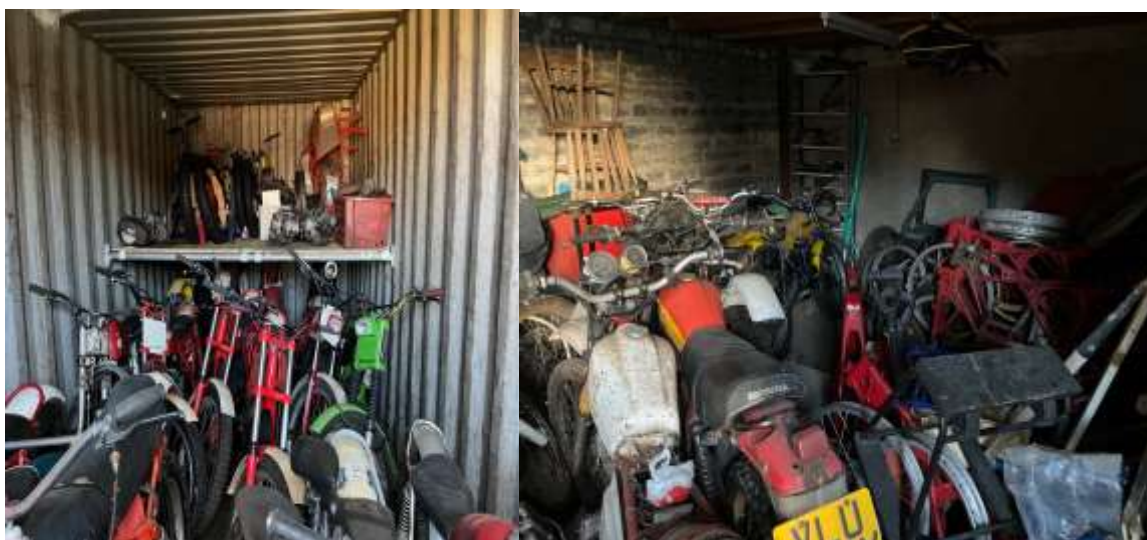
The Peter Bennett collection of classic twin shock trials bikes are being sold by Charterhouse in their Sherborne salerooms on **Tuesday 31<sup>st</sup> May**.

“Peter has decided it is time to let other enthusiasts enjoy his collection and instructed us to auction everything he has amassed,” commented George Beale. “It is a fabulous insight into one man’s 40 year obsession of riding, collecting and generally tinkering around with twin shock motorcycles.”

Peter Bennett grew up with wheels and engines as his father owned a successful garage. In the 1960’s Peter competed as a solo rider with success and returned to trials again in the 1980’s, this time with Bob Honey as his passenger in sidecar trials.

In the collection there are some 60 complete bikes, about 20 dismantled bikes and a huge selection of spare engines, gearboxes, tanks, wheels and other parts, all of which are being sold without reserve.





**As stored, the Peter Bennett collection of classic twin shock trials bikes being sold without reserve**

The bikes and spares, which have been stored cheek by jowl in garages, a shipping container, garden shed and even in his house – both upstairs and downstairs - date from the 1960's with the last bike Peter purchased being some 5 years ago.

In the collection there are Greeves, Fantic, SWM, Yamaha, Royal Enfield, KTM, Yamaha, Bultaco, Honda, Montessa and Italjet amongst many others.

The auction, on **Tuesday 31<sup>st</sup> May at 12 noon**, is being held at **Charterhouse**, The Long Street Salerooms, Sherborne, Dorset DT9 3BS. **Viewing is on Monday 30<sup>th</sup> May 9am-5pm and on the sale day from 9am.**

The catalogue, with live internet bidding, is available to download from [www.charterhouse-auction.com](http://www.charterhouse-auction.com)

For further information regarding this auction contact George Beale and the team at Charterhouse in Sherborne **01935 812277** or email them on **bikes@charterhouse-auction.com**