

## Car Auction is a Classic

Following on from the Charterhouse auction of classic cars in November which totalled nearly £320,000, they have been instructed to sell two early pieces of iconic motoring history in their February classic car auction.

“We have been holding classic car and motorcycle auctions for nearly 15 years and have always been a leading firm of auctioneers carrying out these specialist sales in the West Country. During this time we have sold a fantastic array of barn stored wrecks to concours winning vehicles, and today the market continues to perform very well with high prices being achieved.” commented Matthew Whitney. “Next year we have seven specialist vehicle auction plans and have already received some interesting and valuable vehicles for our February auction.”

First up is a 1959 Austin Se7en Mini. From the first year of production this Mini has covered just 35,000 miles in 55 years and was last on the road in 1977. Having been barn stored in Devon since 1977, it has gathered a charming covering of dust and is a rare survivor.



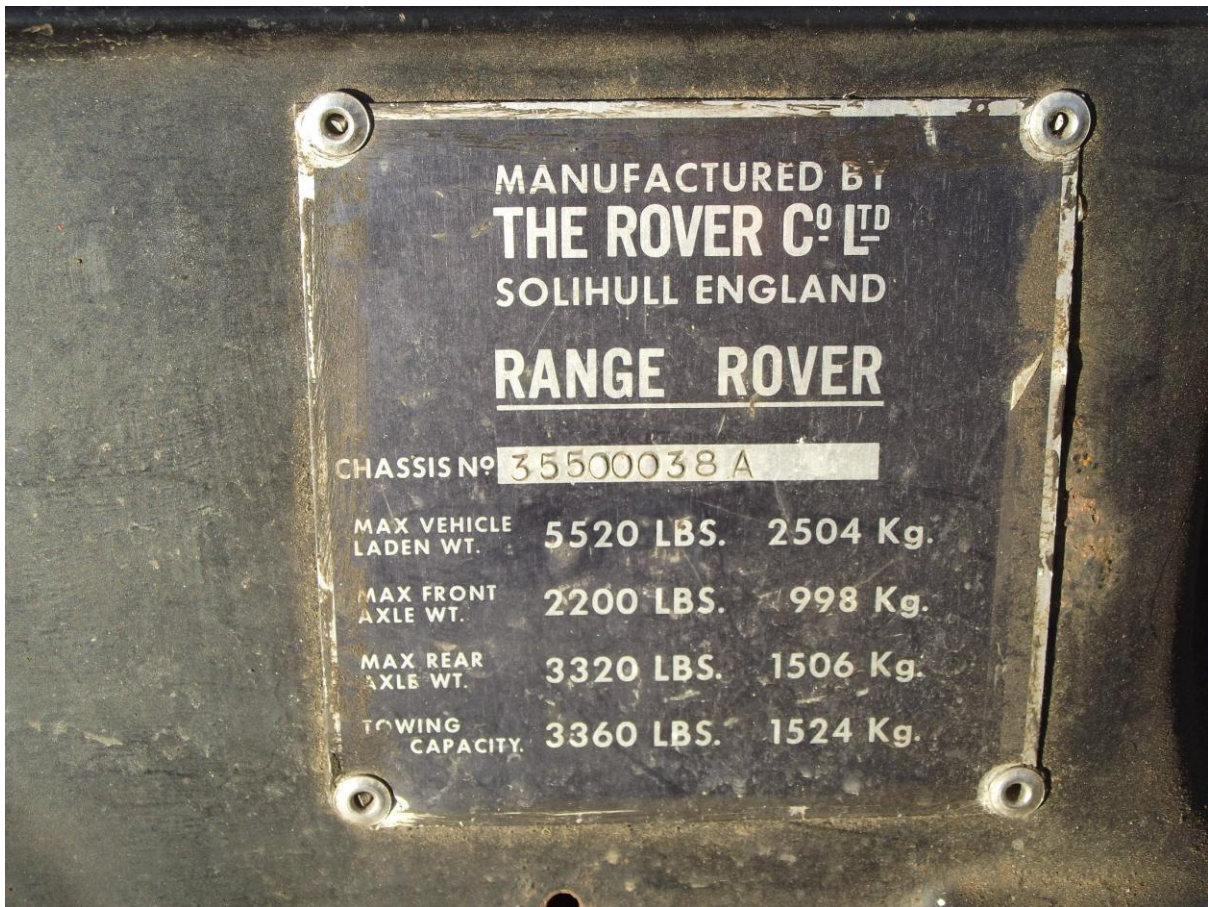
**1959 Austin Se7en Mini, original and barn stored £8,000-£10,000**

Although there are numerous Mini clubs, the 1959 Mini Register is a very exclusive club which has only 184 vehicles registered. Offered for auction by Charterhouse it is estimated at £8,000 - £10,000.

Next up is one of the earliest Range Rover's made. The Range Rover was launched in 1970 and was a success from the start. Now in its fourth generation, early Range Rovers have a large and loyal following. The Charterhouse Range Rover is the 38<sup>th</sup> vehicle made by Velar which was a company set up Land Rover to develop the Range Rover and is just 1 of 40 of the Velar Range Rovers made. Despite being such an important early vehicle, it has been well used over the past 44 years, having had the original V8 petrol engine replaced with a more economical Land Rover 300TDi engine, the interior changed and some of the body panels have been replaced. Despite these changes, this is such an early and important Range Rover, that Charterhouse estimates it at £25,000-£30,000 for its Bristol owner.



**1970 Velar Range Rover, a daily driver £25,000-£30,000**



**1970 Velar Range Rover, a daily driver £25,000-£30,000**

Charterhouse is now accepting further entries for its auction of Classic & Vintage Motorcycles at The Carole Nash Classic Motorcycle Show at the Royal Bath & West Showground, Shepton Mallet on **Sunday 8<sup>th</sup> February**, which is followed a week later with Classic & Vintage Cars at The Footman James Classic Car Show at the same venue.

To enter a car or motorcycle into these auctions, contact **Matthew Whitney ASFAV** at Charterhouse, The Long Street Salerooms, Sherborne DT9 3BS **01935 812277** or via email **[mw@charterhouse-auction.com](mailto:mw@charterhouse-auction.com)**